

# CORRELATION OF MANUS RADIOGRAPH IMAGE TEXTURE VALUE WITH BONE MINERAL DENSITY LUMBAR SPINE VALUE

Agus Mulyono\*

*Department of Physics, Universitas Islam Negeri Maulana Malik Ibrahim Malang  
Jl. Gajayana No. 50 Malang 65144, Indonesia*

*Received: 13<sup>th</sup> January 2022 ; Revised: 18<sup>th</sup> March 2022; Accepted: 24<sup>th</sup> March 2022*

## ABSTRACT

Osteoporosis or bone loss is a chronic disease characterized by low bone mass accompanied by changes in micro-architecture of the bone and a decrease in the quality of bone tissue that can cause bone fragility, so that bones are easily cracked or even fractured. Osteoporosis is diagnosed by measuring bone mineral density using DXA (dual-energy X-ray absorptiometry). Treatment with device this expensive and not widely available. So it is necessary to find an alternative method of detecting a cheap one. This study aims as an initial study to find an alternative way of early detection of osteoporosis by looking for the texture characteristics of the human bone. Sample in This study took 19 people with inclusion criteria including postmenopausal women who declared healthy, not broken bone and has no skeletal abnormalities since birth. Sample measured density mineral bone (BMD) or the degree of osteoporosis with DXA. Then an X-ray is done to get bone image. The stages of the research are: 1) preprocessing X-ray image of the human bone; 2) determine the value of the texture of the human bone image with gray level method co-occurrence matrix 3) test connection between the value of the human bone texture image with BMD lumbar spine. The results of the correlation test show that there is correlation between the value of human bone texture and BMD of the lumbar spine to characterize variance and significantly statistics ( $P < 0.05$ ).

**Keywords:** Radiographic Image; Manus; Texture features; BMD

## Introduction

Osteoporosis is a disease characterized by a reduction in bone mass and changes in bone architecture that result in increased bone fragility and an increased risk of fracture.<sup>1,2</sup> This disease will continue to increase in the future.<sup>3</sup> And this disease often occurs in postmenopausal women and elderly men.<sup>4</sup> This disease is also at risk for fractures of the hip, spine, and wrist so that it can reduce the patient's quality of life and cause an increase in the financial burden on the care system.<sup>5</sup> And also causes the risk of death from fractures.<sup>6</sup>

Osteoporosis is defined as a bone mineral density (BMD) that lies 2.5 standard deviation (SD) or more below the average value for young healthy women (a T-score of  $< 2.5$  SD).<sup>7</sup> Examination of bone mineral density (BMD) in high-risk groups is an

important effort to reduce the prevalence of osteoporosis. Dual Energy X-Ray Absorptiometry (DEXA) is a BMD examination method that is used as the gold standard by the world health organization (WHO).<sup>8</sup>

Examination using DEXA is still quite expensive and not widely available, so it is necessary to look for other alternatives in the examination of osteoporosis. Different bone densities will show different bone textures, so it is necessary to study the characteristics of bone texture.

Radiographically, texture characteristics are one of the important information. Texture analysis is one way to recognize an image, which can be used to distinguish density, uniformity, regularity, roughness, and others. The use of texture analysis in

\*Corresponding author.

E-Mail: gusmul@fis.uin-malang.ac.id

medical images has been widely carried out, including for

Know the architecture of the human bones. There are various methods for extracting texture information from an image, one of which is the gray level co-occurrence matrix (GLCM) method.<sup>9,10</sup> So it is important to know the relationship between texture characteristics and BMD values in the lumbar spine.

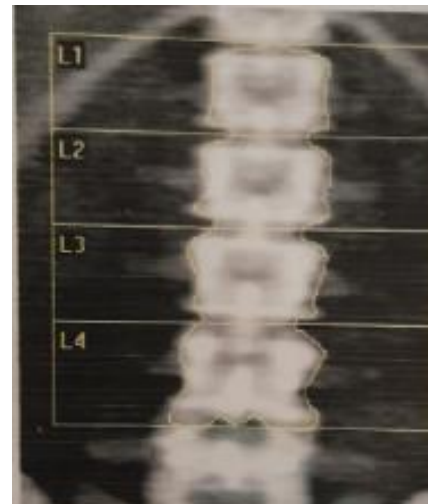
### Methods

The first step is to find data on osteoporosis and normal status from the study sample. Several samples of postmenopausal women aged 55 years and over were brought to the laboratory to have their bone density measured. To get the data using a densitometry (DXA) tool. Then from the sample, an x-ray of the human bone was taken to obtain an image of the human bone.

The second step is to determine the texture value of the manus using the gray level co-occurrence matrix method. The third step is to test the correlation between the value of the human image texture and the BMD value of the lumbar spine.

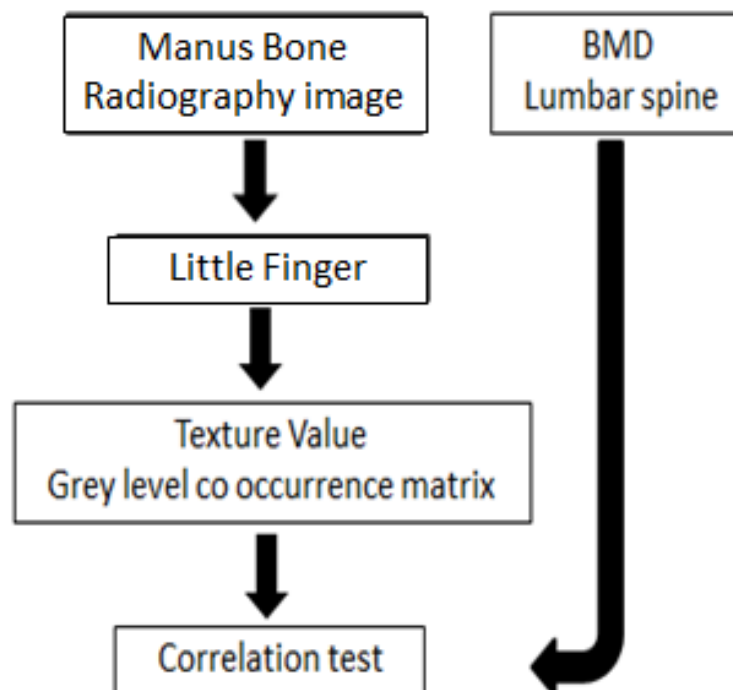
### Results and Discussion

From 19 people measured by Densitometry (DXA) which is a tool for detecting osteoporosis standard WHO obtained 10 osteoporosis data and 9 normal data. an example of a lumbar spine BMD examination (Fig. 2).



**Fig 2.** Lumbar spine BMD examination

In the lumbar spine BMD examination, the BMD values were obtained in the L1, L2, L3 and L4 sections, the BMD examination results were as shown in Table 1.



**Fig 1.** Research Flow

**Table 1.** Lumbar spine BMD values (gr/cm<sup>2</sup>)

No.	BMD L1	BMD L2	BMD L3	BMD L4
1	0.8060	0.9290	1.0250	1.0300
2	0.5690	0.5750	0.5870	0.5850
3	0.6100	0.7040	0.6910	0.7990
4	0.3730	0.4490	0.4990	0.5840
5	0.6140	0.6810	0.6790	0.7400
6	0.3330	0.3940	0.4870	0.5520
7	0.7280	0.8620	0.9050	0.8750
8	0.5110	0.6050	0.6390	0.6730
9	0.4230	0.5140	0.6520	0.6470
10	0.6830	0.8170	0.8990	0.9550
11	0.8910	0.9310	1.0220	1.0880
12	0.9340	1.0900	1.2070	1.1720
13	0.5670	0.6570	0.7400	0.7770
14	0.5670	0.6380	0.6730	0.7350
15	0.4620	0.5230	0.4880	0.4950
16	0.8560	0.9340	0.8990	1.1510
17	0.7960	0.8460	0.8350	0.9630
18	0.9130	0.9820	0.9240	1.1570
19	0.7890	0.8760	0.8650	1.0400



**Fig 3.** Radiograph image of Manus bone

From the results of the bone genu radiograph with the specifications of the ZHIMADZU MODEL XUD 150L-30F. 150 kv 500mA obtained an example image in Figure 3.

From the image of the manus bone, then on the trabeculae of the little finger, texture feature extraction was carried out using the gray level coocurance matrix method. The results of the texture analysis of the

trabeculae of the little finger can be seen in table 2.

The textural values of the human bone image (Angular second moment, contrast, correlation, variance, inverse different moment and entropy) were then correlated with the BMD value of the lumbar spine in sections L1, L2, L3 and L4. The results of the correlation test are shown in table 3

**Table 2.** Texture values of the little finger part of the manus bone using the gray level co-occurrence matrix method

Texture Features	Value
Angular Second Moment	0.00 0.00 0.00 0.00 0.00 etc.
Contrast	122.64 125.58 115.41 135.90 34.59 etc.
Correlation	0.750 0.690 0.700 0.690 0.810 etc.
Variance	185.32 142.16 135.35 154.15 etc.
Inverse Different Moment	0.110 0.100 0.110 0.110 0.210 etc.
Entropy	10,650 10,560 10,510 10,530 9,320 etc.

**Table 3.** The results of the Pearson correlation test between texture values and BMD of the lumbar spine

Texture Value/ BMD	BMD L1	BMD L2	BMD L3	BMD L4
Angular Second Moment	r = -0.161 sig = 0.510	r = -0.142 sig = 0.561	r = -0.190 sig = 0.437	r = -0.225 sig = 0.354
Contrast	r = 0.229 sig = 0.346	r = 0.171 sig = 0.480	r = 0.155 sig = 0.527	r = 0.223 sig = 0.359
Correlation	r = 0.230 sig = 0.343	r = 0.299 sig = 0.213	r = 0.327 sig = 0.172	r = 0.286 sig = 0.234
Variance	r = 0.452 sig = 0.052	r = 0.452 sig = 0.052	r = 0.467 sig = 0.044	r = 0.501 sig = 0.029
Inverse Different Moment	r = -0.187 sig = 0.444	r = -0.140 sig = 0.568	r = -0.143 sig = 0.559	r = -0.197 sig = 0.418
Entropy	r = 0.317 sig = 0.186	r = 0.289 sig = 0.230	r = 0.302 sig = 0.208	r = 0.358 sig = 0.132

From table 3, it can be seen that the texture value at the angular second moment does not correlate with the values of BMD L1, BMD L2, BMD L3 and BMD L4 ( $P > 0.05$ ). The contrast value also does not correlate with the values of BMD L1, BMD L2, BMD L3 and BMD L4 ( $P > 0.05$ ). The Correlation value also did not correlate with the values of BMD L1, BMD L2, BMD L3 and BMD L4 ( $P < 0.05$ ). In the value of variance correlated with values, BMD L3 and BMD L4 ( $P < 0.05$ ). The inverse different

moment value does not correlate with the values of BMD L1, BMD L2, BMD L3 and BMD L4 ( $P > 0.05$ ) and the entropy also does not correlate with the values of BMD L1, BMD L2, BMD L3 and BMD L4 ( $P > 0.05$ ).

The correlation between the 'variance' value with the L3 section of the lumbar spine BMD was moderately correlated, and the variance value was also moderately correlated with the L4 section of the L4 lumbar spine BMD.

Image Radiograph of the analyzed manus is part of the trabecular. Bone that is mostly composed of trabecular bone which means it has a greater bone surface and metabolic activity than cortical bone. Therefore, trabecular bone undergoes mineral changes more often so that it has a predisposition for bone mass deficiency.<sup>11</sup>

In postmenopausal osteoporosis patients, the number of trabeculae will decrease due to a reduction in the hormone estrogen which regulates the formation of collagen, non-collagenous protein matrix, and mineralization.<sup>12</sup> Changes that occur on the surface of the trabeculae until there is thinning of the trabeculae, reduced branching of the trabeculae, and expansion of the marrow area and if it continues, osteoporosis will occur.<sup>13</sup> This condition causes changes in the X-ray absorption conditions in the bone, resulting in variations in the contrast in the gray scale recorded in the image.

Extraction of texture features is a very important part to identify the condition of the bone. Many studies have been conducted to identify osteoporotic bones by analyzing the texture characteristics of bone images, one of which is the GLCM . method<sup>14,15</sup> GLCM method can be used to find the features of osteoporosis picture or not.<sup>16</sup> The combination of GLCM and RLM can be used to detect bone loss.<sup>17</sup> GLCM and SVM also on dental panoramic are also good for detecting normal bone and osteoporosis.<sup>18,19</sup>

This study reinforces previous research that there is a relationship between the value of the human bone texture image and the value of the BMD of the lumbar spine, so that detection through the human bone can also be used.

## Conclusion

Texture values of Angular second moment, contrast, correlation, inverse different moment and entropy are not correlated with BMD of the lumbar spine.

Texture variance values correlated with BMD lumbar spine with moderate strength and statistically significant correlation ( $p < 0.05$ ). So that the texture variance feature can

be used to classify normal bone or osteoporotic bone.

## Acknowledgment

The author would like to thank the State Islamic University of Maulana Malik Ibrahim Malang for the creating infrastructure to support this study.

## References

1. T. Matsumoto and S. Fukumoto. Recent advances in the management of osteoporosis. *F1000Research*, 2017; 6: doi:10.12688/F1000RESEARCH.10682.1.
2. A. Qaseem, MA Forciea, RM McLean, and TD Denberg. Treatment of low bone density or osteoporosis to prevent fractures in men and women: A clinical practice guideline update from the American college of physicians. *Ann. Internal. Med.* 2017 Jun; 166(11): pp. 818–839. doi:10.7326/M15-1361/SUPPL\_FILE/M15-1361\_SUPPLEMENT-V1.PDF.
3. E. Hernlund et al..Osteoporosis in the European Union: Medical management, epidemiology and economic burden: A report prepared in collaboration with the International Osteoporosis Foundation (IOF) and the European Federation of Pharmaceutical Industry Associations (EFPIA). *Arch. Osteoporosis.* 2013; 8, (1–2): doi:10.1007/s11657-013-0136-1.
4. S. Minisola, C. Cipriani, M. Occhiuto, and J. Pepe. New anabolic therapies for osteoporosis. *Internal. Emerg. Med.* 2017;12(7): pp. 915–921. doi:10.1007/s11739-017-1719-4.
5. A. Mithal, B. Bansal, SC Kyer, and P. Ebeling. The Asia-Pacific Regional Audit-Epidemiology, costs, and burden of osteoporosis in India 2013: A report of International Osteoporosis Foundation. *Indian J. Endocrinol. Metab.* 2014; 18(4): pp. 449–454. doi: 10.4103/2230-8210.137485.

6. JA Cauley. Public Health Impact of Osteoporosis. *Journals Gerontol. Ser. A*, 2013 Oct.; 68(10): pp. 1243–1251  
doi:10.1093/GERONA/GLT093.
7. F. Cosman et al. Clinician's Guide to the Prevention and Treatment of Osteoporosis. *Osteoporos Int.* 2014 Sept; 25(10): pp. 2359–2381.  
doi:10.1007/S00198-014-2794-2/TABLES/11.
8. T. Diamond and A. Sheu. Bone mineral density: testing for osteoporosis. *Aust. Prescr.* 2016; 39(2): pp. 35–39.
9. M. Pratiwi, Alexander, J. Harefa, and S. Nanda. Mammograms Classification Using Gray-level Co-occurrence Matrix and Radial Basis Function Neural Network. *Procedia Comput. science..* 2015; 59(Iccsci): pp. 83–91.  
doi:10.1016/j.procs.2015.07.340.
10. A Gebejes, EM Master, and a Samples. Texture Characterization based on Grey-Level Co-occurrence Matrix. *Conf. Informatics Manag. Sci.* 2013; pp. 375–378.
11. M. Kalder, I. Kyvernitakis, US Albert, M. Baier-Ebert, and P. Hadji. Effects of zoledronic acid versus placebo on bone mineral density and bone texture analysis assessed by the trabecular bone score in premenopausal women with breast cancer treatment -induced bone loss: results of the ProBONE II substudy. *Osteoporosis. int.* 2015; 26(1): pp. 353–360.  
doi:10.1007/s00198-014-2955-3.
12. S. Ivanovski and Y. Xiao. Estrogen deficiency associated bone loss in the maxilla: a methodology to quantify the changes in the maxillary intra-radicular alveolar bone in an ovariectomized rat osteoporosis model. *Institute of Health & Biomedical Innovation: Queensland Universiti*; 2015.
13. J. Yang, SM Pham, and DL Crabbe. Effects of oestrogen deficiency on rat mandibular and tibial microarchitecture. *Dentomaxillofacial Radiol.* 2003 Jul.; 32(4): pp. 247–251.  
doi:10.1259/DMFR/12560890.
14. M. Shirvaikar, N. Huang, and XN Dong. The Measurement of Bone Quality Using Gray Level Co-Occurrence Matrix Textural Features. *J. Med. Imaging Heal. Informatics.* 2016 Oct.; 6(6): pp. 1357–1362.  
doi:10.1166/JMIHL.2016.1812.
15. S. Hu, C. Xu, W. Guan, Y. Tang, and L. Yan. Texture feature extraction based on wavelet transform and gray-level co-occurrence matrices applied to osteosarcoma diagnosis. *biomed. mater. eng.* 2014 Jan.; 24(1): pp. 129–143.  
doi:10.3233/BME-130793.
16. M. Deoker and PSN Pat. A Review on Osteoporosis Detection by using CT Images Based on Gray Level Co-Occurrence Matrix and Rule based Approach. 2017; 7(3): pp. 4765–4767.
17. L. Yousfi, L. Houam, A. Boukrouche, E. Lespessailles, F. Ros, and R. Jennane. Texture Analysis and Genetic Algorithms for Osteoporosis Diagnosis. 2019 Sept.; 34(5):  
doi:10.1142/S0218001420570025.
18. JJ Hwang et al.. Strut analysis for osteoporosis detection model using dental panoramic radiography. *Dentomaxillofacial Radiol.* 2017; 46(7)  
doi:10.1259/dmfr.20170006.
19. A. Valentinitich et al.. Opportunistic osteoporosis screening in multi-detector CT images via local classification of textures. *Osteoporos. Int.* 2019; 30(6): pp. 1275–1285  
doi:10.1007/s00198-019-04910-1.